

**14 FUSION+HYBRID
FUSION ENERGI**



Go Further



Craftsmanship that attracts **AND**
fuel efficiency¹ that inspires.

¹EPA-estimated ratings: 22 city/34 hwy/26 combined mpg, 2.5L iVCT I-4, actual mileage will vary; 23 city/36 hwy/28 combined mpg, 1.5L EcoBoost[®] automatic, actual mileage will vary; 25 city/37 hwy/29 combined mpg, 1.6L EcoBoost manual, actual mileage will vary; 22 city/33 hwy/26 combined mpg, 2.0L EcoBoost I-4, FWD, actual mileage will vary; 22 city/31 hwy/25 combined mpg, 2.0L EcoBoost I-4, AWD, actual mileage will vary; 44 city/41 hwy/42 combined mpg, 2.0L iVCT I-4 Hybrid, actual mileage will vary; 95 city/81 hwy/88 combined MPGe, 2.0L iVCT I-4 Plug-In Hybrid, actual mileage will vary. MPGe is the EPA equivalent measure of gasoline fuel efficiency for electric mode operation.

**14 FUSION-HYBRID
FUSION ENERGI**
ford.com





Delivers the power of choice.

No matter your preference, there's a 2014 Ford Fusion that's right for you. Featuring award-winning exterior design, a range of fuel-efficient engines and an array of driver-assist technologies¹ inside and out, Fusion empowers your choice in sophisticated style. "With its highly fuel-efficient, low-liter, turbo-assisted, gas-powered engines, hybrid and plug-in electric options, there seems to be a Fusion for every midsize driver," says Autobytel.com, which named Fusion "Autobytel 2013 Sedan of the Year."

EB Fusion EcoBoost[®]

The gas-powered Fusion impresses at the pump with its choice of 3 turbocharged, direct-injection EcoBoost engines.² And the standard 2.5L gas-engine Fusion provides plenty of fuel efficiency as well.³

H Fusion Hybrid

Seamlessly switches between a gas-powered engine and an electric motor. Fusion Hybrid has an EPA-estimated rating of 44 city mpg.⁴ And the state-of-the-art lithium-ion battery is automatically recharged by the gasoline engine and regenerative braking.

P Fusion Energi Plug-In Hybrid

Gives you the option of plugging in or not. And with that choice comes outstanding efficiency,⁵ whether in all-electric mode or a combination of gas and electric. And it has an EPA-estimated range of 550 miles.⁶

Titanium. White Platinum Metallic Tri-coat. Fusion Energi Titanium. Tuxedo Black Metallic. Hybrid SE. Ice Storm Metallic. Available equipment.

¹Available feature. ²EPA-estimated ratings: 23 city/36 hwy/28 combined mpg, 1.5L EcoBoost automatic, actual mileage will vary; 25 city/37 hwy/29 combined mpg, 1.6L EcoBoost manual, actual mileage will vary; 22 city/33 hwy/26 combined mpg, 2.0L EcoBoost I-4, FWD, actual mileage will vary; 22 city/31 hwy/25 combined mpg, 2.0L EcoBoost I-4, AWD, actual mileage will vary. ³EPA-estimated rating: 22 city/34 hwy/26 combined mpg, 2.5L iVCT I-4, actual mileage will vary. ⁴EPA-estimated rating: 44 city/41 hwy/42 combined mpg, Hybrid. Actual mileage will vary. ⁵EPA-estimated rating: 95 city/81 hwy/88 combined MPGe. Actual mileage will vary. MPGe is the EPA equivalent measure of gasoline fuel efficiency for electric mode operation. ⁶EPA-estimated rating: 40 city/36 hwy/38 combined mpg, 14.0-gallon tank; 19 miles electric. Range calculation based on www.fueleconomy.gov. Actual mileage will vary with conditions such as external elements, driving behaviors, vehicle maintenance, and lithium-ion battery age.

**14 FUSION-HYBRID
FUSION ENERGI**
ford.com





Bridges the gap between power and efficiency.

Fusion supplies both. I-4 gas engine choices span from a 2.5L iVCT engine to 3 EcoBoost[®] turbocharged, direct-injection powerplants. With robust low-end torque and virtually no turbo lag, EcoBoost technology squeezes maximum power from each drop of fuel. Along with impressive efficiency. Equipped with a new 1.5L EcoBoost¹ that's mated to a 6-speed SelectShift[®] automatic transmission,¹ Fusion has an EPA-estimated rating of 36 hwy mpg.² The 1.5L EcoBoost can also be equipped with available Auto Start-Stop, which shuts off engine power when Fusion comes to a complete stop and seamlessly restarts it as you release the brake pedal. A 182-hp³ 1.6L EcoBoost¹ is paired with a 6-speed manual¹ for gear-changing fun. For performance-minded drivers, a 240-hp,³ 2.0L EcoBoost¹ teams with a SelectShift automatic,¹ whose 6 speeds can be paddle shifted from the steering wheel. Intelligent all-wheel drive¹ and 19" wheels¹ can also be added on Titanium. As you accelerate through corners, Torque Vectoring Control (standard on all models) enhances your hold on any road.

2.5L iVCT I-4 gasoline engine

6-speed SelectShift automatic
Horsepower: 175 Torque (lb.-ft.): 175

1.5L EcoBoost I-4 gasoline engine

6-speed SelectShift automatic
6-speed SelectShift automatic with Auto Start-Stop

1.6L EcoBoost I-4 gasoline engine

6-speed manual transmission
Horsepower: 182³ Torque (lb.-ft.): 184³

2.0L EcoBoost I-4 gasoline engine

6-speed SelectShift automatic
Horsepower: 240³ Torque (lb.-ft.): 270³

SE, Ruby Red Metallic Tinted Clearcoat. Available equipment.

¹Available feature. ²EPA-estimated rating: 23 city/36 hwy/28 combined mpg, 1.5L EcoBoost automatic. Actual mileage will vary.
³Figures achieved using 93-octane premium fuel.



Hybrid SE. Ice Storm Metallic. Available equipment.

Excels at hybrid mpg fuel efficiency.

The 2014 Fusion Hybrid has an EPA-estimated rating of 44 city mpg.¹ Plus, “no hybrid has ever looked this good,” says TheCarConnection.com. Power-split hybrid architecture helps maximize efficiency by seamlessly switching between the electric traction motor and its 2.0L Atkinson-cycle gasoline I-4 engine. Powered by a state-of-the-art, lithium-ion battery, the traction motor can allow Fusion Hybrid to operate in electric mode at speeds of up to 85 mph. When you’re accelerating at speed or passing, the 2.0L gas engine kicks in as needed to supply extra power. Furthermore, the Regenerative Braking System captures over 90% of brake energy and uses it to help recharge the battery and maximize your efficiency. Even when you’re stopping, you’re moving forward in Fusion Hybrid.



These vibrant “Efficiency Leaves” on the SmartGauge® with EcoGuide instrument cluster of Fusion Hybrid coach you to get the most from every ride. The higher your mpg, the more lush your green leaves – giving you instant feedback to help you improve your efficiency.

¹EPA-estimated rating: 44 city/41 hwy/42 combined mpg, Hybrid. Actual mileage will vary.



Fusion Energi Titanium. Tuxedo Black Metallic. Available equipment.

Ranges far and wide.

Fusion Energi Plug-In Hybrid lets you enjoy an EPA-estimated rating of 95 city MPGe,¹ a gas-plus-electric driving range of 550 miles,² and an all-electric driving range of 19 miles.² After fully recharging in just 2.5 hours using its LED-illuminated charge port and Ford recommended 240-volt outlet,³ Fusion Energi may run all electric and use no gasoline at all on short commutes – even while cruising at highway speeds. Constantly measuring the battery state of charge, and your driving conditions, Fusion Energi chooses the most efficient mode of operation – either continuing to run on battery power or turning on the 2.0L Atkinson-cycle gas engine as needed. A 240-volt home charging station³ by AeroVironment™ is recommended by Ford. The UL-listed, weather-resistant portable charging station is easy to take with you if you relocate. A hard-wired station is also available. To begin the process, please call 1-888-219-6747 or visit evsolutions.com/ford. These charging stations are available with or without full installation services by AeroVironment.



Stay Connected with MyFord® Mobile. Our MyFord Mobile app⁴ was one reason Fusion Energi was named “Connected Car of the Year 2013” in the energy category by *Connected World* magazine. The app and website (myfordmobile.com), featuring a charging station locator powered by PlugShare,⁵ make it easy to monitor and schedule charging from just about anywhere. To maximize your range, set a departure time and cabin temperature while the vehicle is plugged in. Your preconditioned temperature is then attained by drawing power from the charging station, rather than the battery.⁵

¹EPA-estimated rating: 95 city/81 hwy/88 combined MPGe. Actual mileage will vary. MPGe is the EPA equivalent of gasoline fuel efficiency for electric mode operation. ²EPA-estimated rating: 40 city/36 hwy/38 combined mpg, 14.0-gallon tank; 19 miles electric. Range calculation based on www.fueleconomy.gov. Actual mileage will vary with conditions such as external elements, driving behaviors, vehicle maintenance, and lithium-ion battery age. ³Available feature. ⁴MyFord Mobile subscription complimentary for 5 years from the vehicle sale date as recorded by the dealer. Subscription fees apply after 5 years. MyFord Mobile requires a compatible 2G independent cellular network. Evolving technology and cellular networks may affect future availability and functionality. ⁵Effectiveness of cabin conditioning may be reduced by extreme outside temperatures or when using 120-volt charging.

**14 FUSION-HYBRID
FUSION ENERGI**
ford.com





Soothes senses. And sensibilities.

From the comforting white of the overhead light to the 7 hues of ambient lighting,¹ LED illumination greets your eyes inside. Your ears will appreciate the peace from acoustic underbody shields and sound-absorption material, as well as the enthusiastic output of the 12-speaker Audio System from Sony.^{®1} Recharge your power components with a convenient 110-volt outlet!¹ Beyond that, your good sense will also be pleased. Fusion puts plastic bottles and other recycled materials usually destined for landfills to practical reuse. Nearly 40 recycled 16-oz. plastic bottles go into the EcoCloth seats on select models, while recycled material is used for the injection-molded splash shields and other underbody components. Wherever you look, touch or listen, the feeling is the same. Beautifully done.

PUSH-BUTTON



START¹

HEATED



STEERING¹

HEATED¹/COOLED¹



FRONT SEATS

*SE. Dune leather trim.
Luxury Package. Available equipment.*

¹Available feature.



Connects with your voice.

So you can better connect with friends, family, directions, and more. Sound absorption material minimizes extraneous noise. Active noise cancellation¹ uses the audio system to cancel road noise. In this relaxed atmosphere, Ford SYNC^{®2} delivers hands-free calls, Bluetooth[®]-streaming music and more with simple voice commands. Once paired, it can download your contacts and play music from your smartphone, MP3, USB or iPod.[®] Just touch a button on the steering wheel and say things like "Call: Hannah" or "Play playlist: Rock." SYNC AppLink^{™3} lets you control Pandora,[®] iHeartAuto,[™] SiriusXM[®] and select other apps by voice too. Taking command of your drive is easy in Fusion. SYNC. Say the word.

SYNC
POWERED BY **Microsoft**

Titanium. Charcoal Black leather trim. SYNC with MyFord Touch.[®] Available equipment.

¹Fusion Hybrid and Fusion Energi Plug-In Hybrid models only. ²Driving while distracted can result in loss of vehicle control. Only use mobile phones and other devices, even with voice commands, when it is safe to do so. Not all features are compatible with all phones. ³SYNC AppLink is available on select models and compatible with select smartphone platforms. SYNC AppLink is not compatible with MyFord Touch. Commands may vary by phone and AppLink software.

**14 FUSION-HYBRID
FUSION ENERGI**
ford.com





Responds to your needs.

Press "Accept" on the 8" color LCD touch screen of SYNC® with MyFord Touch®¹ to answer a call from your paired phone. With HD Radio™ Technology² and iTunes® tagging, simply touch the shopping cart icon while a new favorite is playing and purchase it later. SiriusXM® Satellite Radio includes a 6-month Sirius All Access trial subscription. Enjoy every premium satellite radio channel, including commercial-free music, plus sports, news, talk, and entertainment channels. Vehicles with a voice-activated Navigation System² may also receive SiriusXM Traffic and SiriusXM Travel Link services as part of the trial, so you'll have the ability to look up fuel prices, check local and national weather, and get detailed traffic information.



Titanium. SYNC with MyFord Touch. Available equipment.

¹Available feature. Driving while distracted can result in loss of vehicle control. Only use SYNC/MyFord Touch/other devices, even with voice commands, when it is safe to do so. Some features may be locked out while the vehicle is in gear. Not all features are compatible with all phones. ²Available feature.



Helps you find your sweet spot.

When parallel parking. Changing lanes. In traffic. And so much more. Active park assist¹ helps find you a parallel parking spot, then steers Fusion into place as you shift gears and control the brake and accelerator pedals. Our Lane-Keeping System¹ is designed to alert you if it detects Fusion drifting toward a lane marker. If you continue to drift, it shudders the steering wheel, alerting you to steer back toward center. BLIS[®] (Blind Spot Information System) with cross-traffic alert¹ uses a light embedded in each sideview mirror² to warn of traffic detected in blind spots as you're driving forward or traffic nearing either side as you're slowly backing up. Adaptive cruise control and collision warning with brake support¹ helps maintain a preset gap from the vehicle in front of you and warns you if a potential collision is detected. Wherever you drive, you can be confident that Fusion is your ally on the road.

¹Available feature. ²BLIS replaces standard integrated blind spot mirrors. Lane-Keeping System does not control steering. Driver-assist features are supplemental and do not replace the driver's judgment.

Brings stability to every drive.

In separate testing, each vehicle in the Fusion lineup earned a 5-star safety rating from the National Highway Traffic Safety Administration (NHTSA),¹ the government's highest-possible vehicle safety rating. In addition, Ford Fusion has earned a 2013 "Top Safety Pick+" from the Insurance Institute for Highway Safety (IIHS).² And it's no wonder. In addition to 8 standard airbags, Fusion offers new inflatable rear safety belts³ in its rear outboard seating positions. AdvanceTrac[®] electronic stability control⁴ helps keep things stable, particularly in inclement weather. And Intelligent All-Wheel Drive (AWD)³ balances torque between the front and rear wheels to enhance handling and maximize traction, typically before wheel slip can even occur.



*Titanium. White Platinum Metallic Tri-coat.
Available equipment.*

¹Ratings based on Overall and Frontal Crash tests. Government 5-star Safety Ratings are part of the U.S. Department of Transportation's New Car Assessment Program (www.safercar.gov). ²2013 Fusion models built after December 2012. 2014 model not yet tested. ³Available feature. ⁴Remember that even advanced technology cannot overcome the laws of physics. It's always possible to lose control of a vehicle due to inappropriate driver input for the conditions.



SE in Ruby Red Metallic Tinted Clearcoat customized with 18" Dark Chrome wheels, molded splash guards, smoked side window deflectors and rear decklid spoiler

Illuminated door sill plates

Rear decklid spoiler

All-weather floor mats

Remote start systems



Exterior

18" Sparkle Nickel-painted aluminum wheels
Flat splash guards
Full vehicle cover¹
Racks and carriers¹
Rear bumper protector
Wheel lock kits

Interior

Ash cup/coin holders
Auto-dimming rearview mirror
Cargo organizers and protectors
Carpeted floor mats
Charge cord carrying case^{1,2}
Interior light kit
Stainless steel door sill plates

Electronics

Bumper-mounted warning sensor systems³
Keyless entry keypad
Portable DVD rear-seat entertainment systems³



¹Ford Licensed Accessory.
²Available on Fusion Energi only.

Fusion Specifications

Standard Features

Mechanical

4-wheel disc Anti-Lock Brake System (ABS)
Electric parking brake
Electric power-assisted steering
Front and rear stabilizer bars
Front-wheel drive (FWD)
Hill start assist
Suspension – Front: independent MacPherson strut; rear: independent multilink
Torque Vectoring Control

Interior

12-volt powerpoints (3)
Auxiliary audio input jack
Cabin air filtration system
Dome light with map lights
Driver and front-passenger sun visors with illuminated vanity mirrors
Full center console with armrest and storage
Illuminated, lockable glove compartment
Message center with trip computer
Power door locks
Power windows with global open/close and one-touch-up/-down feature
Steering wheel-mounted cruise, audio and 5-way MyFord[®] controls
Tilt/telescoping steering column

Exterior

Automatic halogen projector headlamps
Chrome grille
Easy Fuel[®] capless fuel filler
LED taillamps
Rear-window defroster
Solar-tinted glass
Speed-sensitive windshield wipers

Safety & Security

Personal Safety System[™] for driver and front passenger includes dual-stage front airbags³; safety belt pretensioners, safety belt energy-management retractors, safety belt usage sensors, driver's seat position sensor, crash severity sensor, restraint control module and Front-Passenger Sensing System
2-row side-curtain airbags³
Driver and front-passenger knee airbags³
Front-seat side airbags³
3-point safety belts for all seating positions
AdvanceTrac[®] electronic stability control with brake-actuated traction control
Anti-theft perimeter alarm
Belt-Minder[®] front safety belt reminder
Child-safety rear door locks
Emergency in-trunk release handle
Illuminated Entry System
LATCH – Lower Anchors and Tether Anchors for Children MyKey[®]
SecuriLock[®] Passive Anti-Theft System
SOS Post-Crash Alert System[™]
Tire Pressure Monitoring System (excludes spare)

Engines/EPA-Estimated Ratings⁴ & Dimensions

2.5L iVCT I-4

175 hp @ 6,000 rpm
175 lb.-ft. of torque @ 4,500 rpm
6-speed SelectShift[®] automatic
22 city/34 hwy/26 combined mpg

1.5L EcoBoost[®] I-4

6-speed SelectShift automatic
23 city/36 hwy/28 combined mpg
6-speed SelectShift automatic with Auto Start-Stop
25 city/37 hwy/29 combined mpg

1.6L EcoBoost I-4

182 hp @ 5,700 rpm⁵
184 lb.-ft. of torque @ 2,500 rpm⁵
6-speed manual
25 city/37 hwy/29 combined mpg

2.0L EcoBoost I-4

240 hp @ 5,550 rpm⁵
270 lb.-ft. of torque @ 3,000 rpm⁵
6-speed SelectShift automatic
FWD 22 city/33 hwy/26 combined mpg
AWD 22 city/31 hwy/25 combined mpg

2.0L iVCT Atkinson-Cycle I-4 Hybrid with Permanent-Magnet AC-Synchronous Electric Motor

Total system net horsepower: 188
Electronically controlled continuously variable transmission (eCVT)
44 city/41 hwy/42 combined mpg

2.0L iVCT Atkinson-Cycle I-4 Plug-In Hybrid

Total system net horsepower:
195 charge depletion mode; 188 charge sustain mode
Electronically controlled continuously variable transmission (eCVT)
95 city/81 hwy/88 combined MPGe

Exterior	Fusion, Hybrid/Fusion Energi
Wheelbase	112.2"
Length	191.8"
Height	58.2"/58.0"
Width – Mirrors folded	75.2"
Width – Including mirrors	83.5"

Interior	Front/Rear
Head room	39.2"/37.8"
Shoulder room	57.8"/56.9"
Hip room	55.0"/54.4"
Leg room	44.3"/38.3"

Capacities (cu. ft.)	Fusion, Hybrid/Fusion Energi
Passenger volume	102.8
Luggage capacity	16.0, 12.0/8.2
Total interior volume	118.8, 114.8/111.0
Fuel tank (gal.)	
FWD/AWD	16.5/17.5
Hybrid/Fusion Energi	13.5/14.0

³Always wear your safety belt and secure children in the rear seat. ⁴Actual mileage will vary.
⁵Figures achieved using 93-octane premium fuel.

14 FUSION-HYBRID
FUSION ENERGI
ford.com





SE. Charcoal Black cloth trim with red stitching. Appearance Package. Available equipment.

MyFord 4.2" center stack display.

60/40 split fold-flat rear seat.

Easy Fuel® capless fuel filler.

S

Equipment Group 100A
Includes all standard features, plus:

Mechanical

2.5L iVCT I-4 engine
6-speed SelectShift® automatic transmission with shifter button activation
Compact spare

Seating

6-way manual driver's seat
4-way manual front-passenger seat
4-way adjustable front head restraints
60/40 split fold-flat spring-assisted rear seat
Cloth seating

Interior

AM/FM stereo/single-CD player with MP3 capability and 4 speakers
Cruise control
Day/night rearview mirror
Front carpeted floor mats
Single-zone manual air conditioning
SYNC® with MyFord® voice-activated, in-vehicle connectivity system with 4.2" color LCD displays in instrument cluster and center stack; and media hub with USB port

Exterior

16" steel wheels with Sparkle Silver-painted covers and 215/60R16 all-season tires
Black rocker moldings
Body-color door handles
Body-color, power sideview mirrors with integrated blind spot mirrors
Single exhaust with bright tip

Available Options

All-weather floor mats
Inflatable rear safety belts
Remote Start System
Trunk cargo net

SE

Equipment Group 200A
Includes select S features, plus:

Seating

10-way power driver's seat with power lumbar
Rear-seat fold-down center armrest with 2 cupholders

Interior

AM/FM stereo/single-CD player with MP3 capability and 6 speakers
Compass
Outside temperature display
Rear air conditioning ducts
Rear carpeted floor mats
SiriusXM Satellite Radio with 6-month trial subscription

Exterior

17" Sparkle Silver-painted aluminum wheels with 235/50R17 all-season tires
Body-color, power, heated sideview mirrors with security approach lamps and integrated turn signal indicators and blind spot mirrors
Body-color rocker moldings
SecuriCode™ invisible keypad

Available Equipment Groups

Equipment Group 201A – Appearance Package includes 18" 5-spoke premium painted aluminum wheels with 235/45R18 all-season tires; rear decklid spoiler; fog lamps; leather-wrapped steering wheel; EcoCloth seats; and Charcoal Black interior with contrasting red stitching on center console and seats (n/a with Auto Start-Stop)

Equipment Group 202A – Luxury Package includes 1.5L EcoBoost® I-4 engine with 6-speed SelectShift automatic transmission; driver's seat memory feature; 4-way power front-passenger seat fore/aft with power recline; heated front seats; leather-trimmed seats, steering wheel and shift knob; auto-dimming rearview mirror; fog lamps; and power, heated sideview mirrors with memory, security approach lamps, auto-dimming driver's side, and integrated turn signal indicators and blind spot mirrors

Available Options & Packages

1.5L EcoBoost I-4 engine with 6-speed SelectShift automatic transmission
1.5L EcoBoost I-4 engine with 6-speed SelectShift automatic transmission and Auto Start-Stop (requires 17" wheels; n/a with 201A)
1.6L EcoBoost I-4 engine with 6-speed manual transmission
2.0L EcoBoost I-4 engine and 6-speed SelectShift automatic transmission with paddle shifters; includes dual integrated bright exhaust outlets (requires 201A or 202A and 18" wheels)
18" Gloss Black aluminum wheels (requires 202A and 2.0L engine)
18" premium Luster Nickel-painted aluminum wheels (requires 202A and 2.0L engine)
18" summer-only tires (requires 2.0L engine)
Active park assist with Forward Sensing System (requires 202A, SE MyFord Touch® Technology Package and Reverse Sensing System)
Adaptive cruise control and collision warning with brake support (requires 202A, 2.0L engine and SE MyFord Touch Technology Package)

All-weather floor mats
Heated steering wheel (requires 202A and SE MyFord Touch Technology Package; late availability)
Inflatable rear safety belts
Intelligent Access with push-button start (requires 202A and SE MyFord Touch Technology Package)
Power moonroof with universal garage door opener
Premium carpeted front and rear floor mats plus trunk mat
Remote Start System
Reverse Sensing System
SE Luxury Driver Assist Package includes BLIS® (Blind Spot Information System) with cross-traffic alert, Lane-Keeping System, auto high beams, rain-sensing windshield wipers, and 110-volt power outlet (requires 202A and SE MyFord Touch Technology Package)

SE MyFord Touch Technology Package includes SYNC with MyFord Touch voice-activated, in-vehicle connectivity system, which includes SYNC Services! 2 configurable 4.2" color LCD displays in instrument cluster, 8" LCD touch screen in center stack, and media hub with 2 USB ports, SD card reader and audio/video input jacks; rear view camera; dual-zone electronic automatic temperature control
Trunk cargo net
Voice-activated Navigation System with integrated SiriusXM Traffic and Travel Link with 6-month trial subscription (requires SE MyFord Touch Technology Package)



16" Steel with Sparkle Silver-Painted Cover
Standard: **S**



17" Sparkle Silver-Painted Aluminum
Standard: **SE**



18" Gloss Black Aluminum
Optional: **SE**



18" Premium Luster Nickel-Painted Aluminum
Optional: **SE**



18" 5-Spoke Premium Painted Aluminum
Included: **Appearance Package**

¹SYNC Services varies by trim level and model year and may require a subscription. Traffic alerts and turn-by-turn directions available in select markets. Message and data rates may apply. Ford Motor Company reserves the right to change or discontinue this product service at any time without prior notification or incurring any future obligation.

Titanium

Equipment Group 300A

Includes select SE features, plus:

Mechanical

2.0L EcoBoost® I-4 engine

6-speed SelectShift® automatic transmission with paddle shifters

Seating

4-way power front-passenger seat fore/aft with power recline

Leather-trimmed Sport seats with heated front seats and driver's side memory with 3 settings

Interior

Aluminum brake and accelerator pedal covers

Aluminum front-door sill plates

Ambient lighting

Audio System from Sony® with AM/FM stereo/single-CD player with MP3 capability and 12 speakers in 10 locations and HD Radio™ Technology

Auto-dimming rearview mirror

Dual-zone electronic automatic temperature control Intelligent Access with push-button start and Remote Start System (2 key fob transmitters)

Leather-wrapped steering wheel and shift knob

SYNC® with MyFord Touch® voice-activated, in-vehicle connectivity system, which includes SYNC Services¹; 2 configurable 4.2" color LCD displays in instrument cluster; 8" LCD touch screen in center stack; and media hub with 2 USB ports, SD card reader and audio/video input jacks

Exterior

18" polished face wheels with Flash Gray-painted pockets and 235/45R18 all-season tires

Body-color door handles with chrome insert

Body-color, power, heated sideview mirrors with memory, security approach lamps, auto-dimming driver's side, and integrated turn signal indicators and blind spot mirrors

Dual integrated bright exhaust tips

Fog lamps

Rear decklid spoiler

Rear view camera

Reverse Sensing System

Available Options & Packages

18" summer-only tires (requires AWD)

19" H-spoke dark stainless-painted aluminum wheels and 235/40R19 all-season tires

19" Y-spoke Sparkle Silver-painted aluminum wheels with machined face and 235/40R19 all-season tires

Active park assist with Forward Sensing System

Adaptive cruise control and collision warning with brake support

All-weather floor mats

Cooled front seats and 10-way power front-passenger seat (late availability)

Heated steering wheel (late availability)

Inflatable rear safety belts

Intelligent all-wheel drive (AWD)

Interior Appearance Package includes Brick Red leather-trimmed seats and vinyl door inserts, and premium carpeted front and rear floor mats

Power moonroof with universal garage door opener

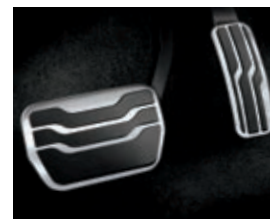
Premium carpeted front and rear floor mats plus trunk mat

Spoiler delete

Titanium Driver Assist Package includes BLIS® (Blind Spot Information System) with cross-traffic alert, Lane-Keeping System, auto high beams, rain-sensing windshield wipers, and 110-volt power outlet

Trunk cargo net

Voice-activated Navigation System with integrated SiriusXM Traffic and Travel Link with 6-month trial subscription



Brick Red leather trim with perforated inserts. Interior Appearance Package. Available equipment.

Intelligent Access with push-button start.

Aluminum brake and accelerator pedal covers.

Audio System from Sony with HD Radio Technology and iTunes® tagging.

Steering wheel-mounted paddle shifters.



18" Polished Face with Flash Gray-Painted Pockets Standard



19" H-Spoke Dark Stainless-Painted Aluminum Optional



19" Y-Spoke Sparkle Silver-Painted Aluminum with Machined Face Optional

¹SYNC Services varies by trim level and model year and may require a subscription. Traffic alerts and turn-by-turn directions available in select markets. Message and data rates may apply. Ford Motor Company reserves the right to change or discontinue this product service at any time without prior notification or incurring any future obligation.

Hybrid S

Equipment Group 400A

Includes select S features, plus:

Mechanical

2.0L iVCT Atkinson-cycle I-4 HEV engine with permanent-magnet AC-synchronous electric motor
Electronically controlled continuously variable transmission (eCVT)
Lithium-Ion Battery Pack System
Regenerative Braking System
Tire mobility kit in lieu of spare tire

Seating

6-way manual driver's seat
Unique EcoCloth seats with REPREVE® fabric

Hybrid SE

Equipment Group 500A

Includes select Hybrid S features, plus:

Seating

10-way power driver's seat with power lumbar

Interior

Compass
Outside temperature display
Rear air conditioning ducts
Rear carpeted floor mats
SiriusXM Satellite Radio with 6-month trial subscription

Exterior

Body-color, power, heated sideview mirrors with security approach lamps and integrated turn signal indicators and blind spot mirrors
Body-color rocker moldings
SecuriCode™ invisible keypad

Available Equipment Groups

Equipment Group 501A – Appearance Package includes 18" 5-spoke premium painted aluminum wheels with 235/45R18 all-season tires; rear decklid spoiler; fog lamps; leather-wrapped steering wheel; and Charcoal Black EcoCloth interior with contrasting red stitching on center console and seats

Equipment Group 502A – Luxury Package includes driver's seat memory feature; 4-way power front-passenger seat fore/aft with power recline; heated front seats; leather-trimmed seats, steering wheel and shift knob; auto-dimming rearview mirror; fog lamps; and power, heated sideview mirrors with memory, security approach lamps, auto-dimming driver's side, and integrated turn signal indicators and blind spot mirrors

Interior

Active noise cancellation
AM/FM stereo/single-CD player with MP3 capability and 6 speakers
Dual-zone electronic automatic temperature control
Front carpeted floor mats
SmartGauge® with EcoGuide

Exterior

17" 15-spoke Sparkle Silver-painted aluminum wheels with P225/50R17 all-season tires
Single bright exhaust tip

Available Options

All-weather floor mats
Inflatable rear safety belts
Remote Start System
Trunk cargo net

Available Options & Packages

18" premium Luster Nickel-painted aluminum wheels (requires 502A)

Active park assist with Forward Sensing System (requires 502A, SE MyFord Touch® Technology Package and Reverse Sensing System)

Adaptive cruise control and collision warning with brake support (requires SE MyFord Touch Technology Package; n/a on 500A)

All-weather floor mats

Heated steering wheel (requires 502A and SE MyFord Touch Technology Package; late availability)

Inflatable rear safety belts

Intelligent Access with push-button start (requires 502A and SE MyFord Touch Technology Package)

Power moonroof with universal garage door opener

Premium carpeted front and rear floor mats plus trunk mat

Remote Start System

Reverse Sensing System

SE Luxury Driver Assist Package includes BLIS® (Blind Spot Information System) with cross-traffic alert, Lane-Keeping System, auto high beams, and rain-sensing windshield wipers (requires 502A and SE MyFord Touch Technology Package)

SE MyFord Touch Technology Package includes SYNC® with MyFord Touch voice-activated, in-vehicle connectivity system, which includes SYNC Services¹; 2 configurable 4.2" color LCD displays in instrument cluster; 8" LCD touch screen in center stack; and media hub with 2 USB ports, SD card reader and audio/video input jacks; 110-volt power outlet; rear view camera; and dual-zone electronic automatic temperature control
Trunk cargo net

Voice-activated Navigation System with integrated SiriusXM Traffic and Travel Link with 6-month trial subscription (requires SE MyFord Touch Technology Package)

Hybrid Titanium

Equipment Group 600A

Includes select Hybrid SE features, plus:

Seating

4-way power front-passenger seat fore/aft with power recline

Leather-trimmed Sport seats with heated front seats and driver's side memory with 3 settings

Interior

110-volt power outlet
Aluminum brake and accelerator pedal covers
Aluminum front-door sill plates
Ambient lighting
Audio System from Sony® with AM/FM stereo/single-CD player with MP3 capability and 12 speakers in 10 locations and HD Radio™ Technology
Auto-dimming rearview mirror

Intelligent Access with push-button start and Remote Start System (2 key fob transmitters)

Leather-wrapped steering wheel and shift knob
SYNC with MyFord Touch voice-activated, in-vehicle connectivity system, which includes SYNC Services¹; 2 configurable 4.2" color LCD displays in instrument cluster; 8" LCD touch screen in center stack; and media hub with 2 USB ports, SD card reader and audio/video input jacks

Exterior

18" polished face wheels with Flash Gray-painted pockets and 235/45R18 all-season tires

Body-color door handles with chrome insert

Body-color, power, heated sideview mirrors with memory, security approach lamps, auto-dimming driver's side, and integrated turn signal indicators and blind spot mirrors

Fog lamps

Rear decklid spoiler

Rear view camera

Reverse Sensing System

Available Options & Packages

Active park assist with Forward Sensing System

Adaptive cruise control and collision warning with brake support

All-weather floor mats

Cooled front seats and 10-way power front-passenger seat (late availability)

Heated steering wheel (late availability)

Inflatable rear safety belts

Interior Appearance Package includes Brick Red leather-trimmed seats and vinyl door inserts, and premium carpeted front and rear floor mats

Power moonroof with universal garage door opener

Premium carpeted front and rear floor mats plus trunk mat

Spoiler delete

Titanium Driver Assist Package includes BLIS (Blind Spot Information System) with cross-traffic alert, Lane-Keeping System, auto high beams, and rain-sensing windshield wipers

Trunk cargo net

Voice-activated Navigation System with integrated SiriusXM Traffic and Travel Link with 6-month trial subscription



SmartGauge with EcoGuide instrument cluster. Available equipment.

110-volt power outlet?²

Climate control screen on SYNC with MyFord Touch.²

10-way power driver's seat with power lumbar and memory.²



17" 15-Spoke Sparkle Silver-Painted Aluminum
Standard: **Hybrid S & Hybrid SE**



18" 5-Spoke Premium Painted Aluminum
Available: **SE Appearance Package**



18" Premium Luster Nickel-Painted Aluminum
Optional: **Hybrid SE**



18" Polished Face with Flash Gray-Painted Pockets
Standard: **Hybrid Titanium**

¹SYNC Services varies by trim level and model year and may require a subscription. Traffic alerts and turn-by-turn directions available in select markets. Message and data rates may apply. Ford Motor Company reserves the right to change or discontinue this product service at any time without prior notification or incurring any future obligation. ²Available feature.

Fusion Energi SE

Equipment Group 700A

Includes select Hybrid SE features, plus:

Mechanical

2.0L iVCT Atkinson-cycle I-4 PHEV engine with permanent-magnet AC-synchronous electric motor
120-volt convenience charging cable
Larger capacity Lithium-Ion Battery Pack System

Seating

4-way power front-passenger seat fore/aft with power recline

Leather-trimmed seats with heated front seats and driver's side memory with 3 settings

Interior

110-volt power outlet

EV Mode button with EV Now, EV Later and EV Auto

Leather-wrapped steering wheel and shift knob

MyFord® Mobile app with 5-year service agreement

SYNC® with MyFord Touch® voice-activated, in-vehicle connectivity system, which includes SYNC Services¹; 2 configurable 4.2" color LCD displays in instrument cluster; 8" color LCD touch screen in center stack; and media hub with 2 USB ports, SD card reader and audio/video input jacks

Exterior

17" 15-spoke Sparkle Silver-painted aluminum wheels with P225/50R17 all-season tires

Body-color, power, heated sideview mirrors with memory, security approach lamps, auto-dimming driver's side, and integrated turn signal indicators and blind spot mirrors

External charge port with LED-illuminated state-of-charge indicator

Fog lamps

Tire mobility kit

Available Options & Package

Active park assist with Forward Sensing System (requires Reverse Sensing System)

Adaptive cruise control and collision warning with brake support

All-weather floor mats

Charge cord carrying case by THULE^{®2}

Charge door decal

Heated steering wheel (late availability)

Inflatable rear safety belts

Intelligent Access with push-button start

Power moonroof with universal garage door opener

Premium carpeted front and rear floor mats

Rear view camera

Reverse Sensing System

SE Luxury Driver Assist Package includes BLIS[®] (Blind Spot Information System) with cross-traffic alert, Lane-Keeping System, auto high beams, and rain-sensing windshield wipers

Trunk cargo net

Voice-activated Navigation System with integrated SiriusXM Traffic and Travel Link with 6-month trial subscription

Fusion Energi Titanium

Equipment Group 800A

Includes select Fusion Energi SE features, plus:

Interior

Aluminum brake and accelerator pedal covers

Aluminum front-door sill plates

Ambient lighting

Audio System from Sony® with AM/FM stereo/single-CD player with MP3 capability and 12 speakers in 10 locations and HD Radio™ Technology

Intelligent Access with push-button start and Remote Start System (2 key fob transmitters)

Exterior

Body-color door handles with chrome insert

Rear decklid spoiler

Rear view camera

Reverse Sensing System

Available Options & Packages

Active park assist with Forward Sensing System

Adaptive cruise control and collision warning with brake support

All-weather floor mats

Charge cord carrying case by THULE²

Charge door decal

Cooled front seats and 10-way power front-passenger seat (late availability)

Heated steering wheel (late availability)

Inflatable rear safety belts

Interior Appearance Package includes Brick Red leather-trimmed seats and vinyl door inserts, and premium carpeted front and rear floor mats

Power moonroof with universal garage door opener

Premium carpeted front and rear floor mats

Spoiler delete

Titanium Driver Assist Package includes BLIS (Blind Spot Information System) with cross-traffic alert, Lane-Keeping System, auto high beams, and rain-sensing windshield wipers

Trunk cargo net

Voice-activated Navigation System with integrated SiriusXM Traffic and Travel Link with 6-month trial subscription



Titanium. Charcoal Black leather trim with perforated inserts. Available equipment.

LED-illuminated charge port.

240-volt electric charging station by Leviton.^{®3}

Energy flow screen.



17" 15-Spoke Sparkle Silver-Painted Aluminum Standard

¹SYNC Services varies by trim level and model year and may require a subscription. Traffic alerts and turn-by-turn directions available in select markets. Message and data rates may apply. Ford Motor Company reserves the right to change or discontinue this product service at any time without prior notification or incurring any future obligation. ²Ford Licensed Accessory. ³Available feature. Third-party installation required.

Exteriors



White Platinum Metallic Tri-coat



Oxford White



Ingot Silver Metallic



Sterling Gray Metallic



Ruby Red Metallic Tinted Clearcoat



Sunset Metallic



Ice Storm Metallic



Deep Impact Blue Metallic



Dark Side Metallic

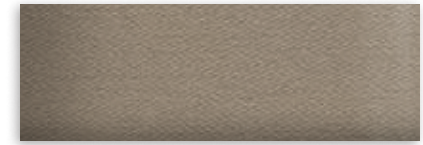


Tuxedo Black Metallic

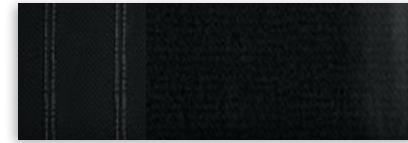
Interiors



1 Earth Cloth



2 Dune Cloth



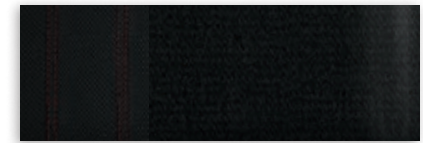
3 Charcoal Black Cloth



4 Dune Leather



5 Charcoal Black Leather



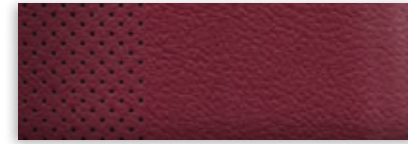
6 Charcoal Black Cloth with Red Stitching



7 Charcoal Black Leather with Perforated Inserts



8 Medium Soft Ceramic Leather with Perforated Inserts



9 Brick Red Leather with Perforated Inserts

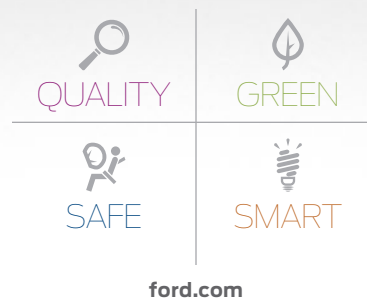
Interiors

Exteriors	S	SE	Titanium	Hybrid S	Hybrid SE	Hybrid Titanium	Fusion Energi SE	Fusion Energi Titanium
White Platinum Metallic Tri-coat ¹		2 3 4 5 6	7 8 9		2 3 4 5 6	7 8 9	4 5	7 8 9
Oxford White	1	2 3 4 5 6	7 8 9	1	2 3 4 5 6	7 8 9	4 5	7 8 9
Ingot Silver Metallic	1	2 3 4 5 6	7 8 9	1	2 3 4 5 6	7 8 9	4 5	7 8 9
Sterling Gray Metallic	1	2 3 4 5 6	7 8 9	1	2 3 4 5 6	7 8 9	5	7 8 9
Ruby Red Metallic Tinted Clearcoat ¹	1	2 3 4 5 6	7 8	1	2 3 4 5 6	7 8	4 5	7 8
Sunset Metallic	1	2 3 4 5 6	7 8	1	2 3 4 5 6	7 8	4 5	7 8
Ice Storm Metallic				1	2 3 4 5 6	7 8	4 5	7 8
Deep Impact Blue Metallic	1	2 3 4 5 6	7 8	1	2 3 4 5 6	7 8	4 5	7 8
Dark Side Metallic	1	2 3 4 5 6	7 8	1	2 3 4 5 6	7 8	4 5	7 8
Tuxedo Black Metallic	1	2 3 4 5 6	7 8 9	1	2 3 4 5 6	7 8 9	4 5	7 8 9

4, 5 Luxury Package on SE and Hybrid SE 6 Appearance Package on SE and Hybrid SE 9 Interior Appearance Package on Titanium and Hybrid Titanium

¹Additional charge.

Colors are representative only. See your dealer for actual paint/trim options.



New Vehicle Limited Warranty. We want your Ford Fusion ownership experience to be the best it can be. Under this warranty, your new vehicle comes with 3-year/36,000-mile bumper-to-bumper coverage, 5-year/60,000-mile Powertrain Warranty coverage, 5-year/60,000-mile safety restraint coverage, and 5-year/unlimited-mile corrosion (perforation) coverage – all with no deductible. Fusion unique electric components are covered during the Hybrid/Electric Unique Component Coverage, which lasts for 8 years or 100,000 miles, whichever occurs first. Please ask your Ford Dealer for copies of these limited warranties. □ **Roadside Assistance.** Covers your vehicle for 5 years or 60,000 miles, so you have the security of knowing that help may be only a phone call away should you run out of fuel, lock yourself out of the vehicle or need towing. Your Ford Dealer can provide complete details on all of these advantages. □ **Ford Credit.** Get the ride you want. Whether you plan to lease or finance, you'll find the choices that are right for you at Ford Credit. Ask your Ford Dealer for details or check us out at fordcredit.com. □ **Ford Extended Service Plan.** For a purchase or lease, the Ford Extended Service Plan (ESP) gives you "Peace-of-Mind" protection designed to cover key vehicle components and protect you from the cost of unexpected repairs. Ask your dealer for a Ford ESP, the only service contract backed exclusively by Ford and honored at all Ford Lincoln dealerships. □ **Insurance Services.** Get Ford Motor Company quality in your auto insurance. Our program offers industry-leading benefits and competitive rates. Call 1-877-367-3847, or visit us at fordvip.com for a no-obligation quote. Insurance offered by American Road Services Company (in CA, American Road Insurance Agency), a licensed agency and subsidiary of Ford Motor Company. □ **Genuine Ford Accessories** will be warranted for whichever provides you the greatest benefit: 12 months or 12,000 miles (whichever occurs first), or the remainder of your Bumper-to-Bumper 3-year/36,000-mile New Vehicle Limited Warranty. Ford Licensed Accessories (FLA) are warranted by the accessory manufacturer's warranty. FLA are fully designed and developed by the accessory manufacturer and have not been designed or tested to Ford Motor Company engineering requirements. Contact your Ford Dealer for details and/or a copy of all limited warranties.

Comparisons based on 2013/2014 competitive models (Fusion class is Midsize Sedans; Fusion Hybrid class is Midsize Hybrid Sedans; Fusion Energi class is Midsize Plug-In Hybrid Sedans), publicly available information and Ford certification data at time of release. Some features discussed may be optional. Vehicles shown may contain optional equipment. Features shown may be offered only in combination with other options or subject to additional ordering requirements or limitations. Dimensions shown may vary due to optional features and/or production variability. Following release of the PDF, certain changes in standard equipment, options and the like, or product delays may have occurred which would not be included in these pages. Your Ford Dealer is the best source for up-to-date information. Ford Division reserves the right to change product specifications at any time without incurring obligations. Dimensions may vary by trim level. □ HD Radio is a proprietary trademark of iBiquity Digital Corp. □ iHeartAuto is a trademark owned by Clear Channel Broadcasting, Inc. All third party uses are authorized under license. □ iPod and iTunes are trademarks of Apple Inc., registered in the U.S. and other countries. □ Microsoft is a registered trademark of Microsoft Corporation. □ PANDORA, the PANDORA logo, and the Pandora trade dress are trademarks or registered trademarks of Pandora Media, Inc. Used with permission. □ REPREVE is a registered trademark of Unifi, Inc. □ SiriusXM Satellite Radio, SiriusXM Traffic and Travel Link subscriptions sold separately or as a package after trial period. See SiriusXM Customer Agreement for complete terms at siriusxm.com. Fees and programming subject to change. Sirius satellite service is available only to those at least 18 years of age in the 48 contiguous USA, DC, and Puerto Rico (with coverage limitations). Sirius, XM and all related marks and logos are trademarks of Sirius XM Radio Inc. □ Sony is a registered trademark of the Sony Corporation. □ The Bluetooth word mark is a trademark of the Bluetooth SIG, Inc. □ THULE is a registered trademark of Thule Sweden AB.

Follow Ford:



facebook.com/fordfusion



twitter.com/fordfusion



youtube.com/fordfusion



gplus.to/FordMotorCompany